

For Agarose gel electrophoresis

Agarose Kanto Series



Kanto Reagents



Features

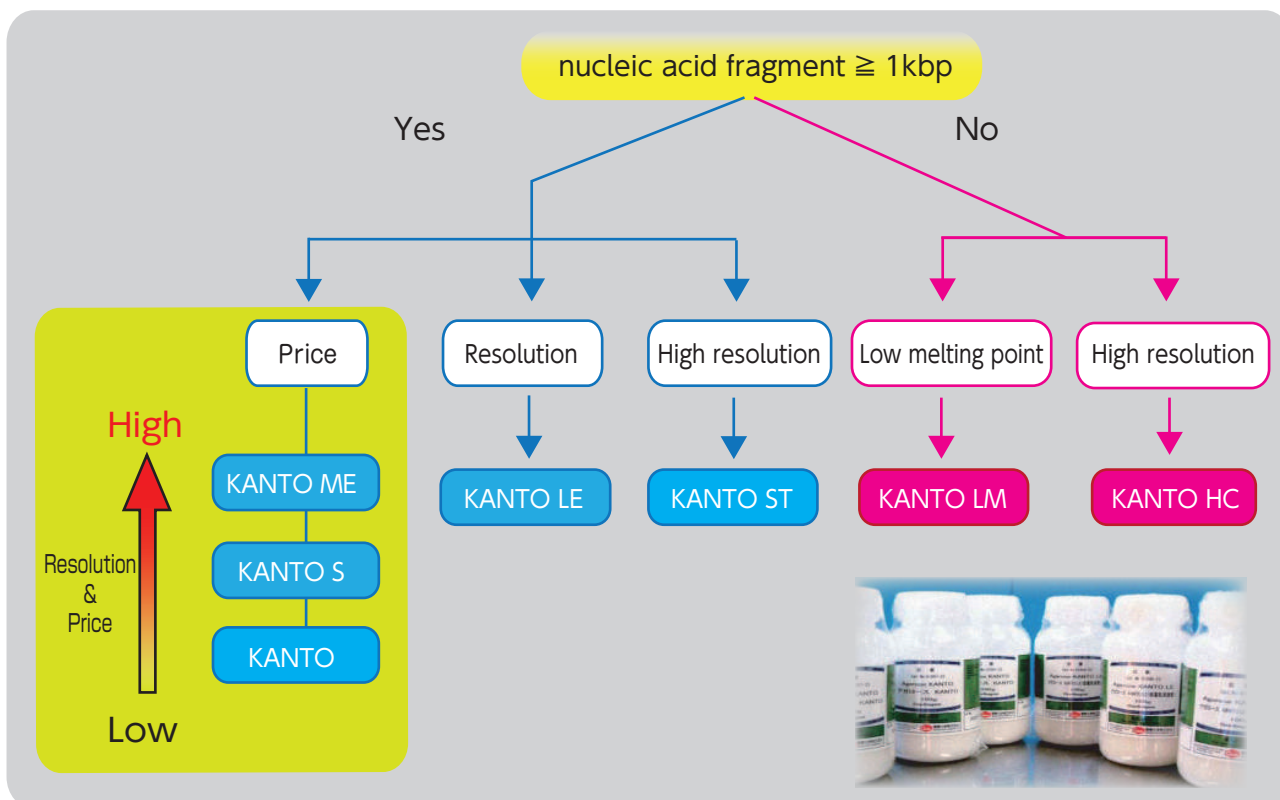
- Easy to use
- Low cost and High quality

Product Information

Product No.	Product Name	Grade	Package Size
01097-23	Agarose KANTO	for electrophoresis	100 g
01097-79			1 kg
01095-23	Agarose KANTO S	for electrophoresis	100 g
01095-79			1 kg
01088-23	Agarose KANTO ME (Medium electroendosmosis)	for electrophoresis	100 g
01088-79			1 kg
01098-23	Agarose KANTO LE (Low electroendosmosis)	for electrophoresis	100 g
01098-79			1 kg
01089-23	Agarose KANTO HC (Small nucleic acid fragment \leq 1kbp)	for electrophoresis	100 g
01089-79			1 kg
01096-96	Agarose KANTO LM (Low melting point)	for electrophoresis	50 g
01096-08			500 g
01090-23	Agarose KANTO ST (High gel strength)	for electrophoresis	100 g
01090-79			1 kg

Kanto Reagents

How to Select



Product Name	Features
Agarose KANTO	The lowest cost & popular type for routine use.
Agarose KANTO S	Standard type for routine use.
Agarose KANTO ME	Middle electroendosmosis type for various analysis.
Agarose KANTO LE	Low electroendosmosis type for high accuracy analysis.
Agarose KANTO HC	High solubility type for small molecules analysis.
Agarose KANTO LM	Low melting point type for gel extraction.
Agarose KANTO ST	High gel strength type for large molecules analysis.

Specification

	KANTO	KANTO S	KANTO ME	KANTO LE	KANTO HC	KANTO LM	KANTO ST
Product No.	01097-23	01095-23	01088-23	01098-23	01089-23	01096-96	01090-23
Gel Strength(g/cm ²)	900 ~ 1,400	900 ~ 1,200	1,200 ~ 1,700	1,200 ~ 1,500	800 ~ 900	400 ~ 600	1,800 ~ 2,300
Gelling pont(°C)	36 ~ 40	37 ~ 40	36 ~ 42	36 ~ 38	36 ~ 42	28 ~ 33	37 ~ 43
Melting point(°C)	87 ~ 94	82 ~ 89	82 ~ 95	84 ~ 92	82 ~ 90	70 ~ 75	87 ~ 94
Electroendosmosis(-Mr)	Max. 0.3		Max. 0.2	Max. 0.1			Max. 0.2
Sulfate(%)	Max. 0.3		Max. 0.2	Max. 0.1		Max. 0.2	

Technical Tips

◎:Best ○:better △:Possible

	KANTO	KANTO S	KANTO ME	KANTO LE	KANTO HC	KANTO LM	KANTO ST
Concentration for gel formation	1.0 ~ 2.0				1.0 ~ 4.0	0.5 ~ 4.0	0.5 ~ 2.0
Range of Separation (kbp)	0.2 ~ 30		0.1 ~ 30	0.05 ~ 30	0.01 ~ 20	0.1 ~ 20	1 ~ 200
Staining by the blue pigment*1	△	○			◎		
Extraction of DNA from gel	○				◎		
Blotting	○				◎		
Solubility*2	Max. 70	Max. 90					Max. 70

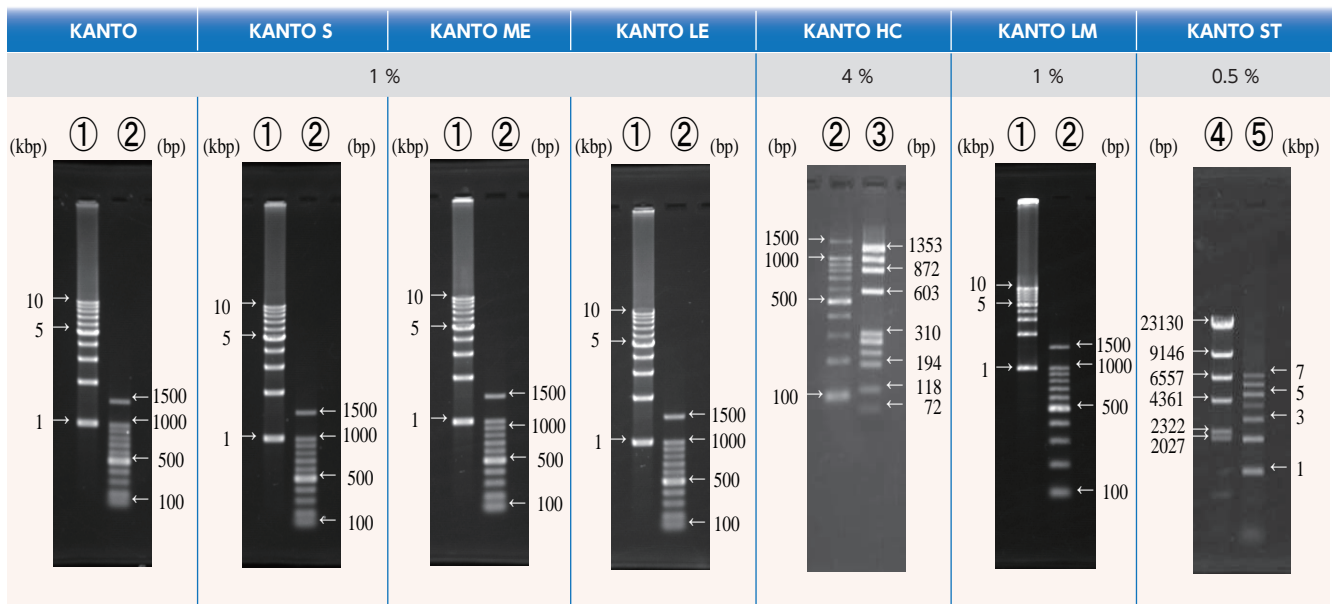
* 1. Identified a background of the gel staining by ViewaBlue™ Stain KANTO.

* 2. Agarose Solubility (%) = (The gel strength when you boil three times by a microwave oven/The gel strength when you completely dissolved it) ×100

Applications

Using each agarose, these electrophoresis banding patterns are on the same condition. (TAE/100V/30min)

- ①1 kbp Ladder (1 kbp ~ 10 kbp) ②100 bp Ladder (100 bp ~ 1kbp,1.5 kbp) ③*phiX174* *Hae* III digest
 ④ λ -*Hind* III Digest ⑤1 kbp Ladder (1 kbp ~ 7 kbp)



Related Products

Buffers

Product No.	Product Name	Grade	Package size
46509-79	10 × TAE Buffer	for electrophoresis	1 L
46508-79	50 × TAE Buffer	for electrophoresis	1 L
46510-79	10 × TBE Buffer	for electrophoresis	1 L

Related Products

Materials

Product No.	Product Name	Grade	Package size
40326-08	2-Amino-2-hydroxymethyl-1,3-propanediol (Tris)	for life science	500 g
40326-84			15 kg
14097-00	Disodium dihydrogen ethylenediamine tetraacetate dihydrate(EDTA)	Guaranteed reagent for JIS	500 g
01021-00	Acetic acid	Guaranteed reagent for JIS	500 mL

Staining solutions

Product No.	Product Name	Grade	Package size
14575-43	Ethidium bromide solution	for electrophoresis	10 mL
44045-08	ViewaBlue™ Stain KANTO	for electrophoresis	500 mL

Loading buffer

Product No.	Product Name	Grade	Package size
24080-96	6×Loading buffer	for electrophoresis	2 mL × 6
24079-96	6×Loading buffer orange G	for electrophoresis	2 mL × 6



KANTO CHEMICAL CO., INC.
REAGENT DIVISION

East Muromachi Mitsui BLDG, 2-1, Nihonbashi Muromachi 2-chome,
 Chuo-ku, Tokyo, 103-0022, JAPAN

Telephone +81-3-6214-1092

Telefax +81-3-3241-1053

<http://www.kanto.co.jp>

E-mail; kanto-61@gms.kanto.co.jp